

SIZE	QTY	SYM	PLATED	TOL
0.5	189	+	YES	+/-0.0
0.8	470	□	YES	+/-0.0
0.9	4	⊗	YES	+/-0.0
1	14	⊗	YES	+/-0.0
1.1	30	+ ^c	YES	+/-0.0
1.2	8	+ ^d	YES	+/-0.0
1.3	4	+ ^A	YES	+/-0.0
2.5	4	⊗	YES	+/-0.0
1.1	30	+ ^B	NO	+/-0.0
3.2	4	◇	NO	+/-0.0

JTA Design

Metrik crossover

Layer:Drill Drawing

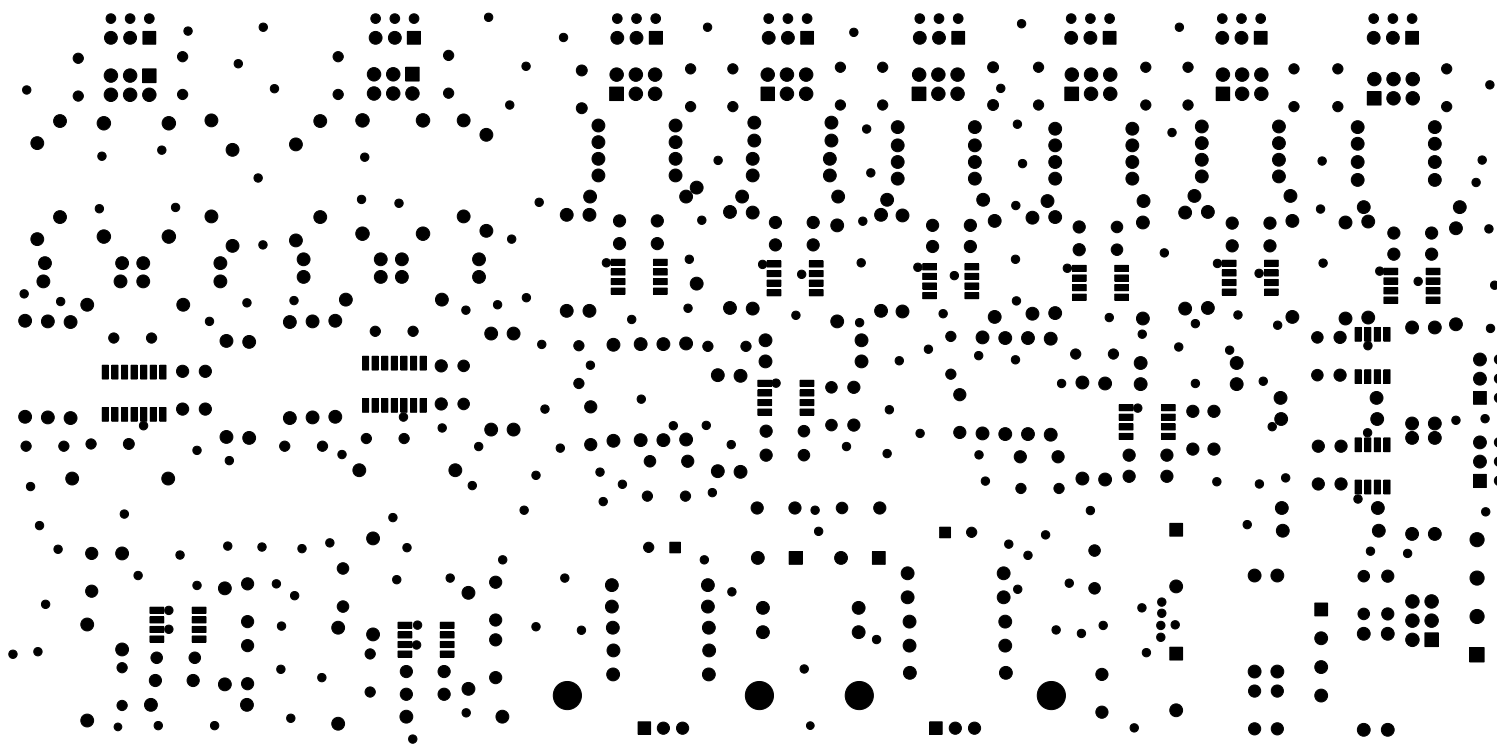
Design date: 2012-12-01

Version: 01

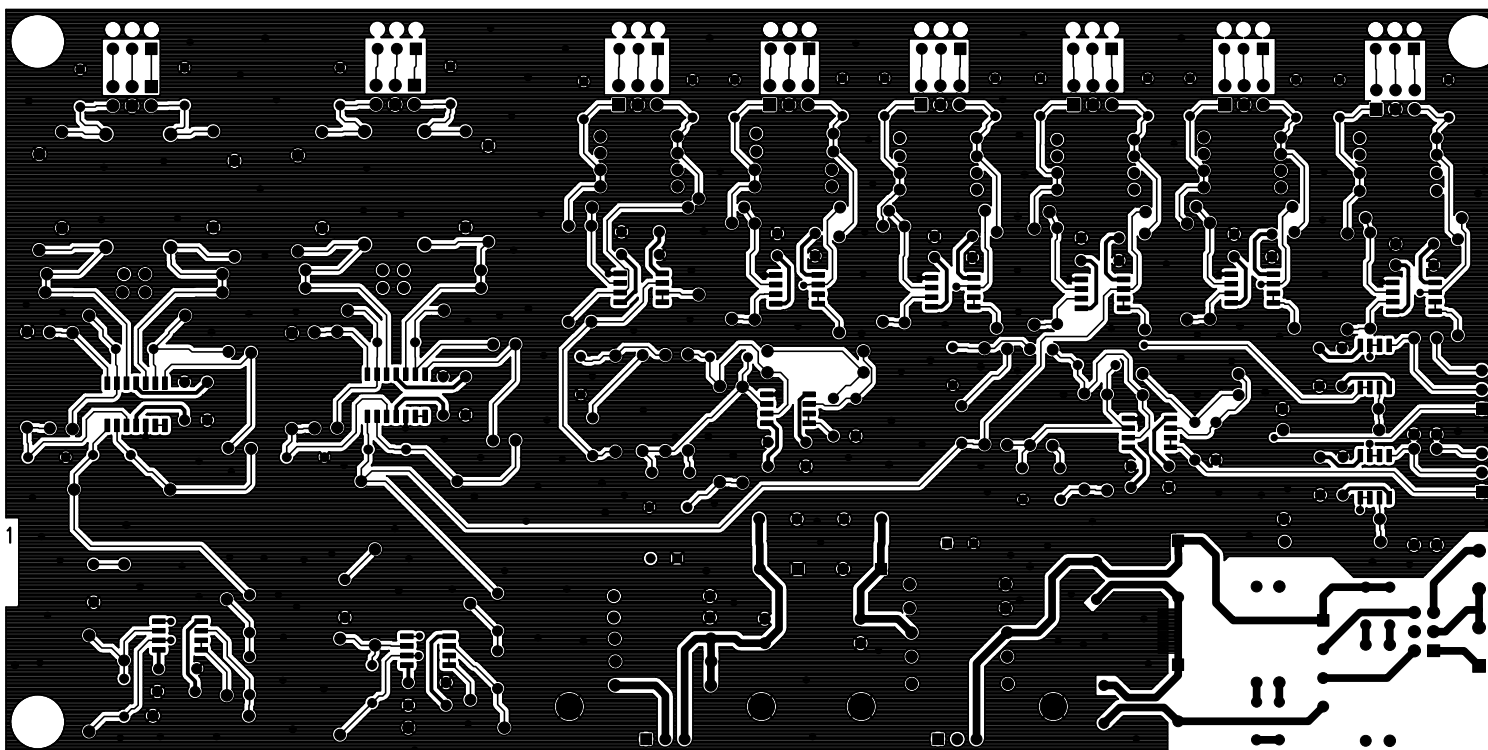
LP OUT R + -
HP OUT R - +
BUF OUT R + -
LP OUT L - +
HP OUT L + -
BUF OUT L - +
R IN - +
L IN + -

Metrik active crossover 01

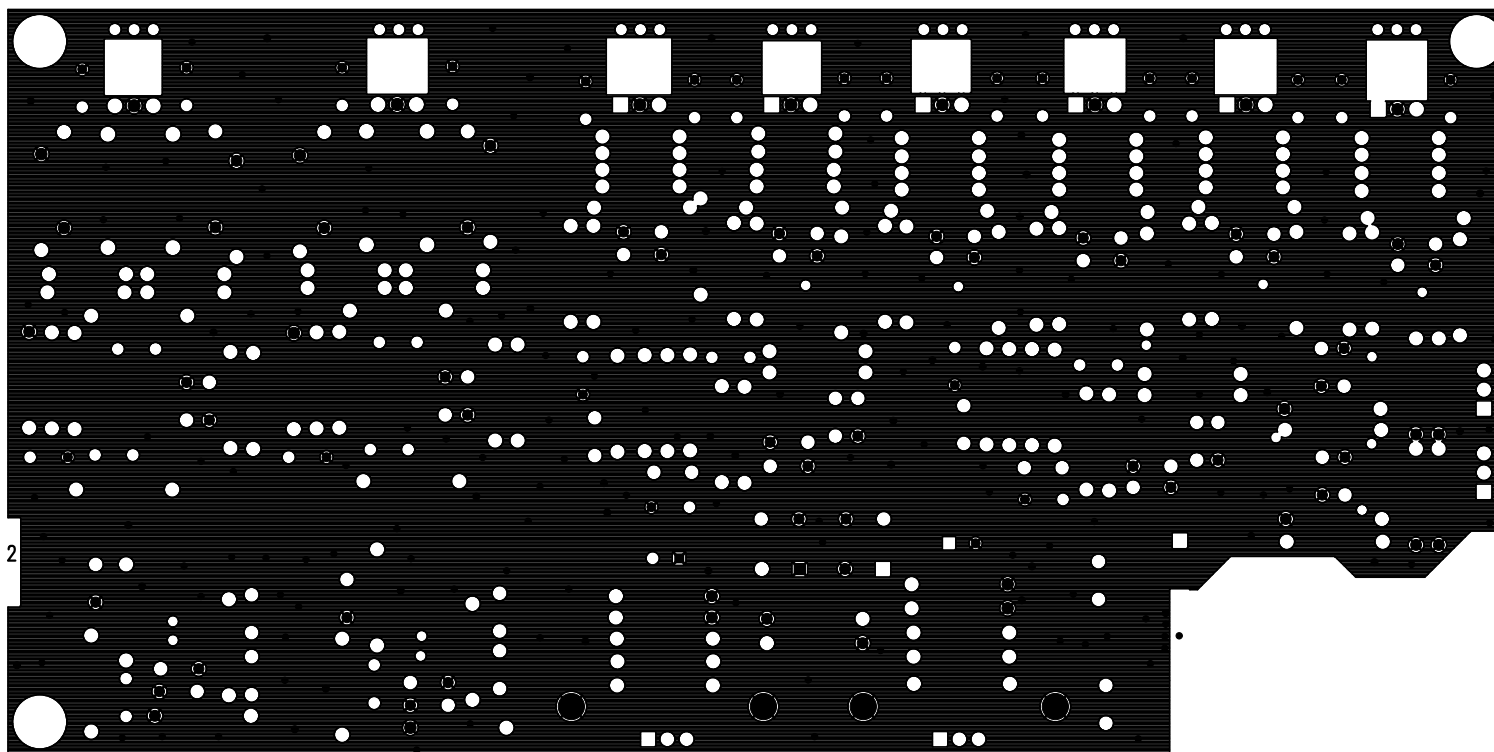
JTA Design
Metrik crossover
Layer:Top Silkscreen
Design date: 2012-12-01
Version: 01



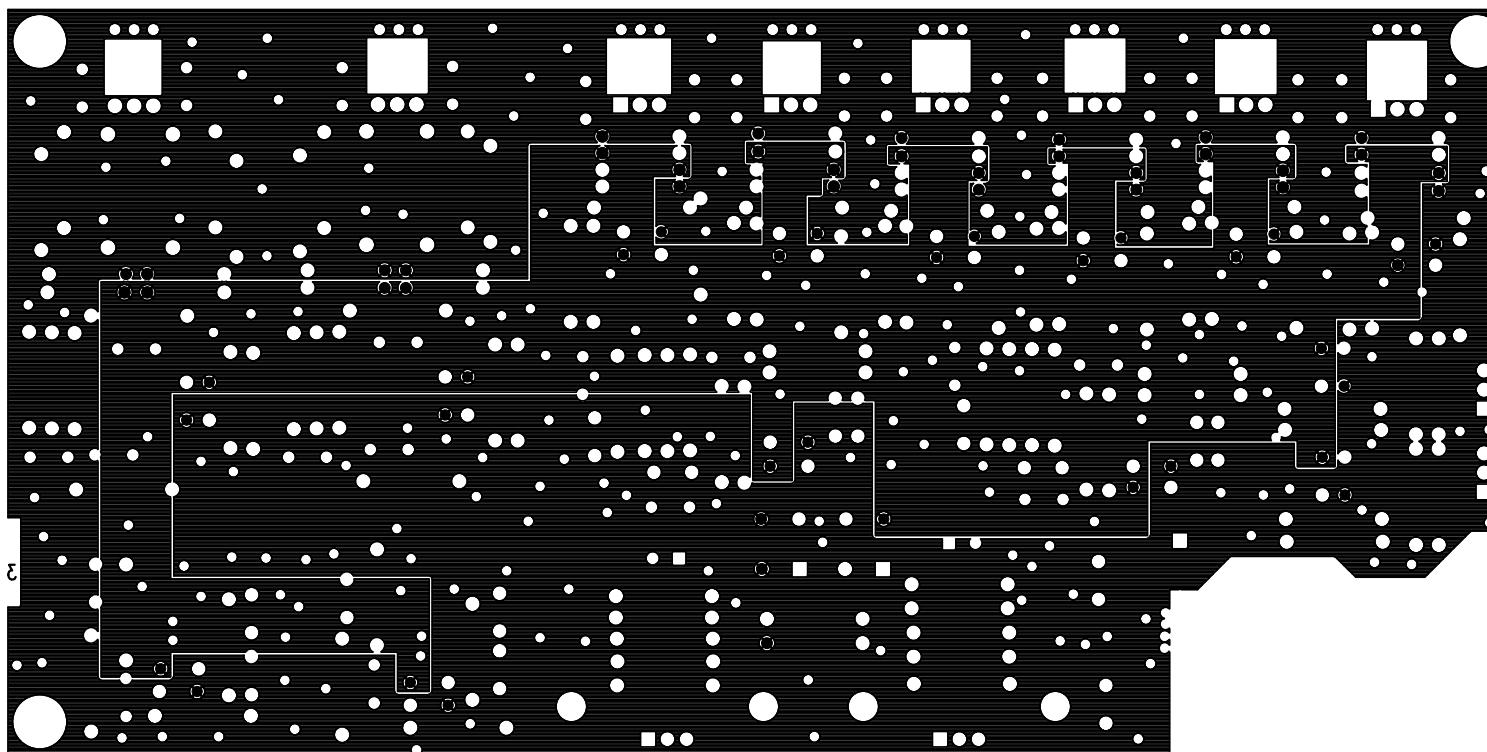
JTA Design
Metrik crossover
Layer:Solder Mask Top
Design date: 2012-12-01
Version: 01



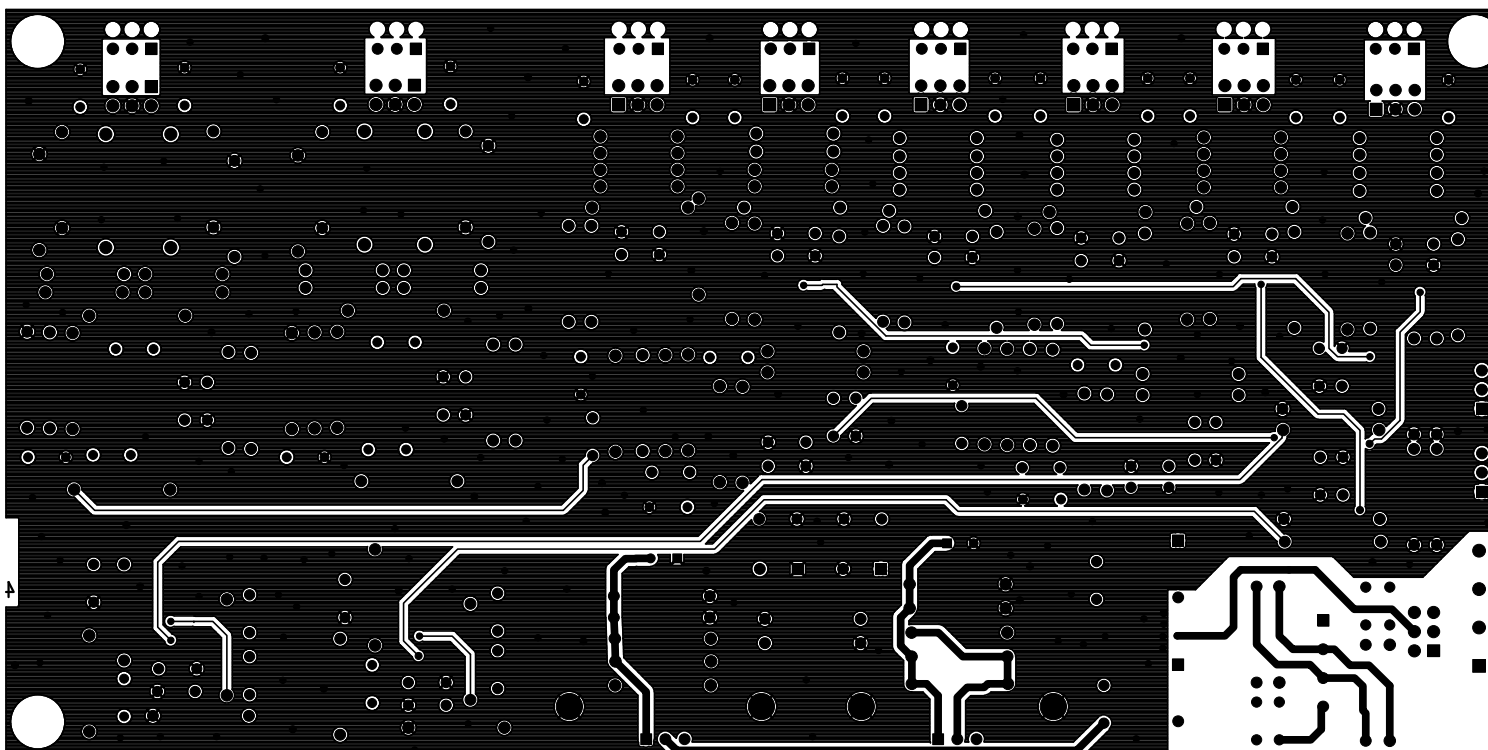
JTA Design
Metrik crossover
Layer:Top Layer 1/4
Design date: 2012-12-01
Version: 01



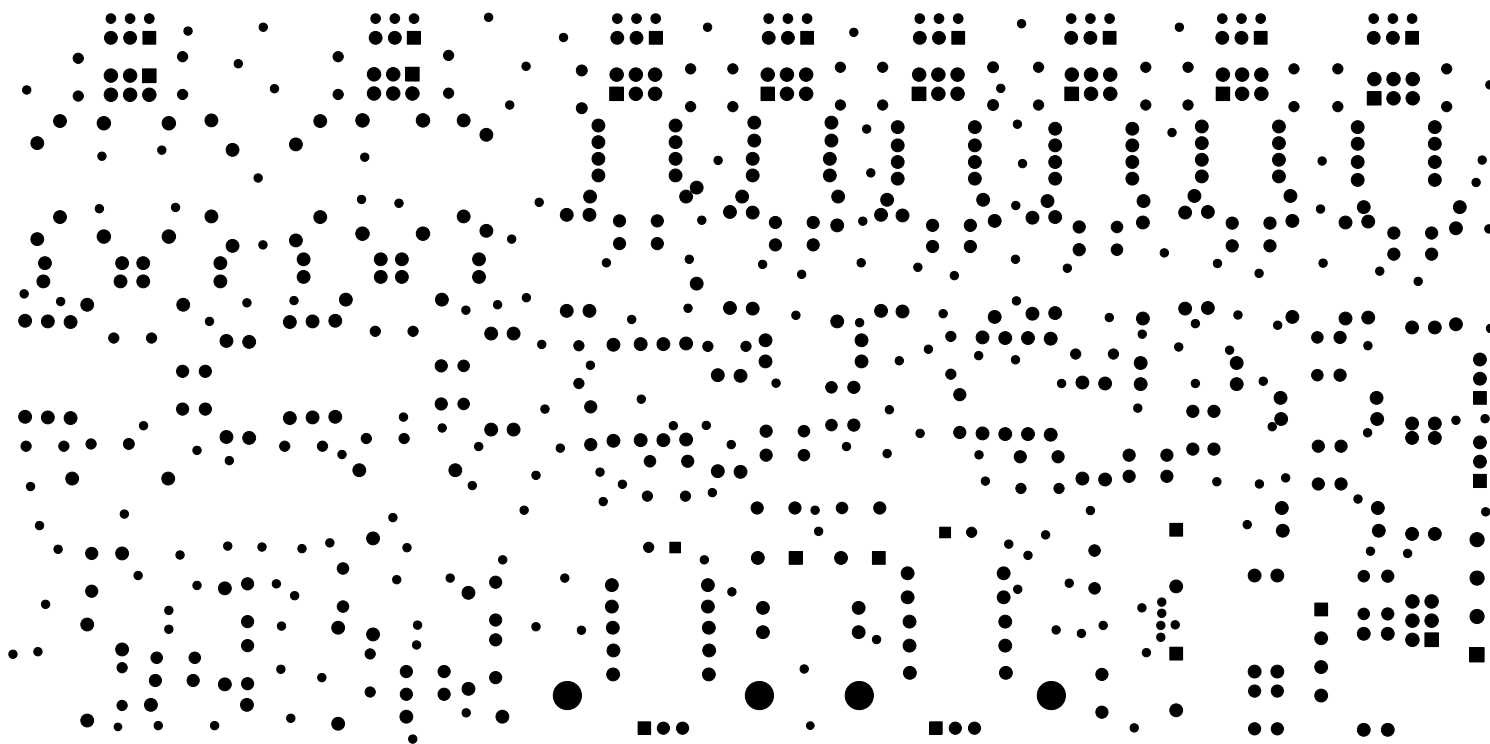
JTA Design
Metrik crossover
Layer:Layer 2/4
Design date: 2012-12-01
Version: 01



JTA Design
Metrik crossover
Layer:Layer 3/4
Design date: 2012-12-01
Version: 01



JTA Design
Metrik crossover
Layer:Bottom Layer 4/4
Design date: 2012-12-01
Version: 01



JTA Design
Metrik crossover
Layer:Solder Mask Bottom
Design date: 2012-12-01
Version: 01

