

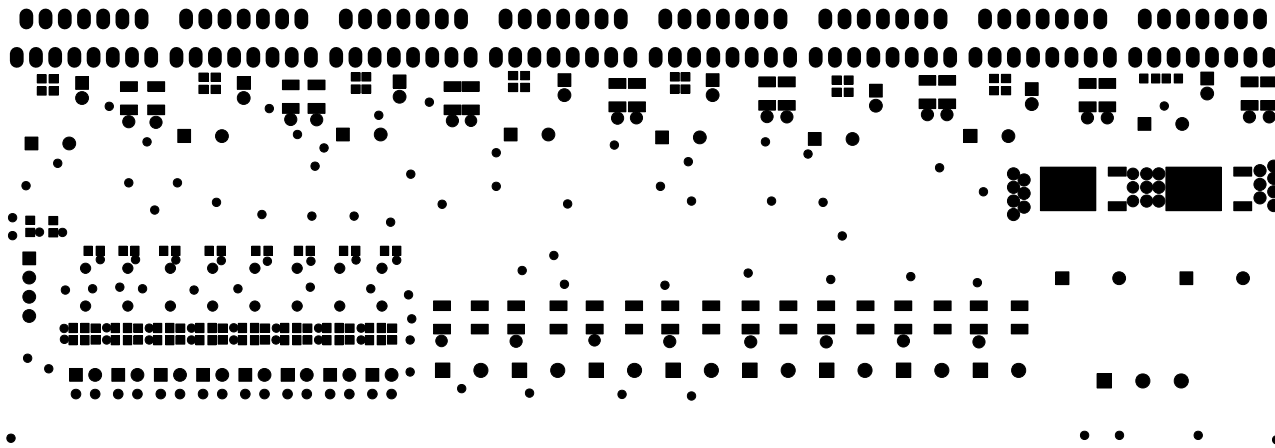
SIZE	QTY	SYM	PLATED	TOL
0.5	94	+	YES	+/-0.0
0.8	16	+ ^A	YES	+/-0.0
1	203	⊠	YES	+/-0.0
1.1	20	◇	YES	+/-0.0
1.3	19	⊠	YES	+/-0.0
1.1	16	□	NO	+/-0.0
3.2	2	⊠	NO	+/-0.0

JTA Design
TDA7294 8 channel amplifier
Layer:Drill Drawing
Design date: 2013-12-22
Version: 01

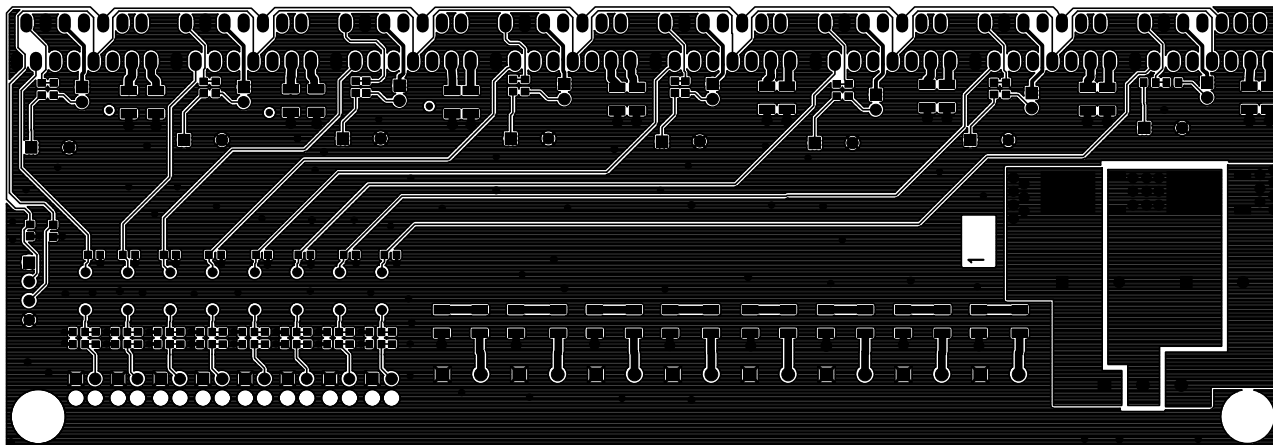
TDA7294 8 channel amplifier 01
JTA 2013

+ + + + + + + + + + + + + + + +
IN1 IN2 IN3 IN4 IN5 IN6 IN7 IN8 OUT1 OUT2 OUT3 OUT4 OUT5 OUT6 OUT7 OUT8

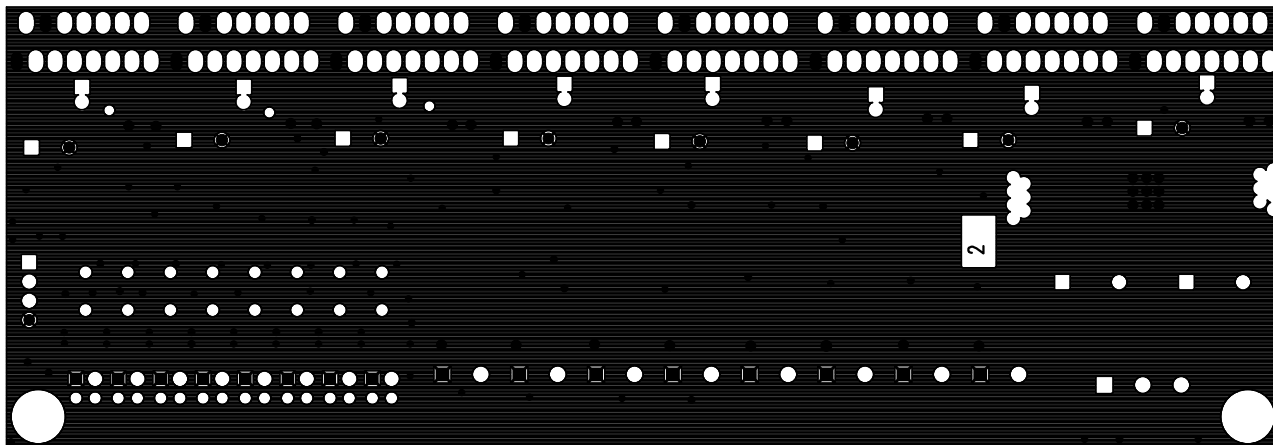
| |
|-----------------------------|
| JTA Design |
| TDA7294 8 channel amplifier |
| Layer:Top Silkscreen |
| Design date: 2013-12-22 |
| Version: 01 |



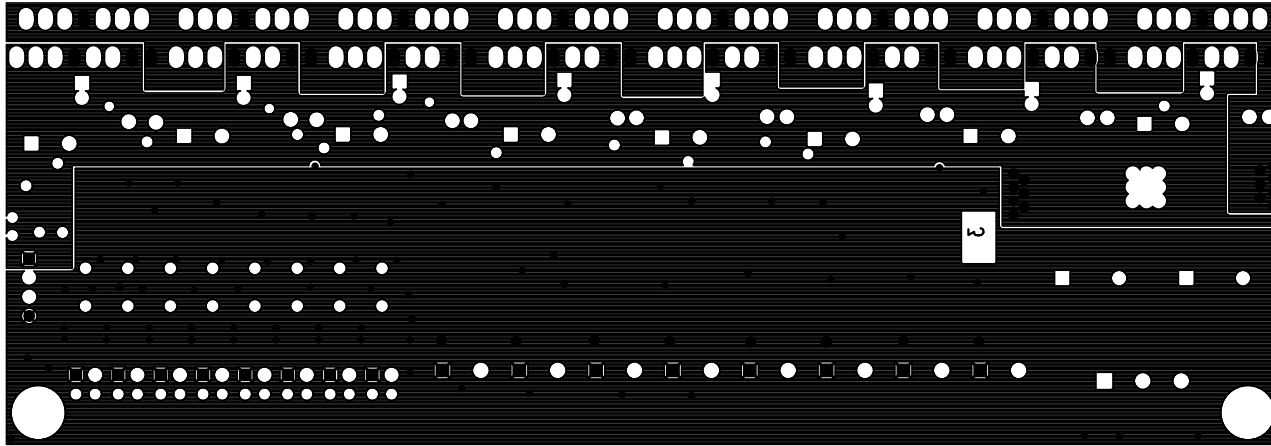
| |
|-----------------------------|
| JTA Design |
| TDA7294 8 channel amplifier |
| Layer:Solder Mask Top |
| Design date: 2013-12-22 |
| Version: 01 |



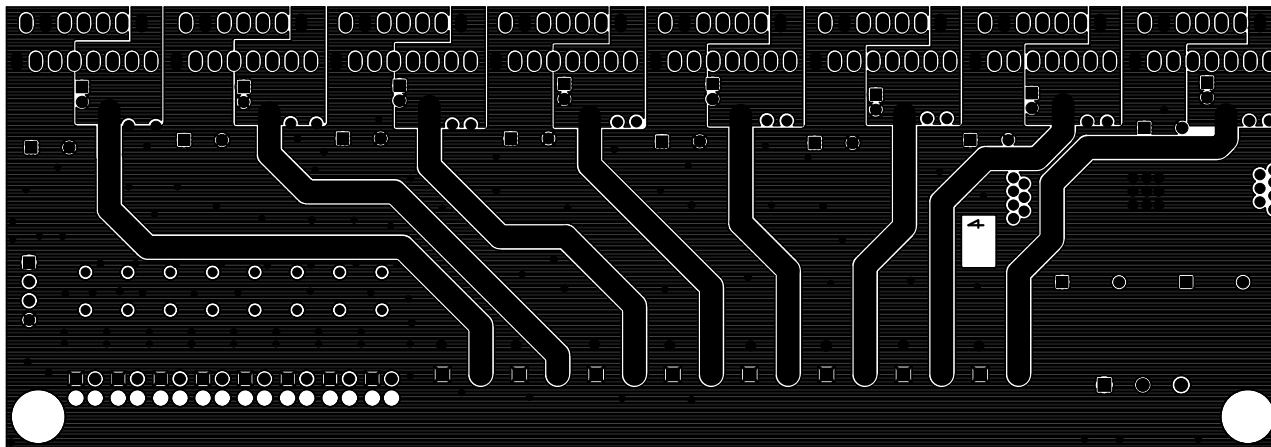
| |
|-----------------------------|
| JTA Design |
| TDA7294 8 channel amplifier |
| Layer:Top Layer 1/4 |
| Design date: 2013-12-22 |
| Version: 01 |



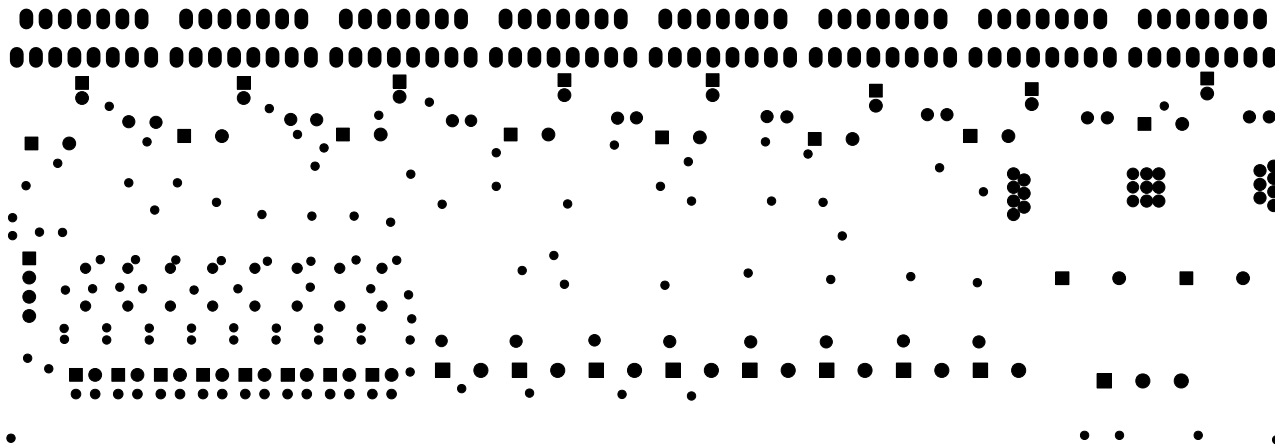
| |
|-----------------------------|
| JTA Design |
| TDA7294 8 channel amplifier |
| Layer:Layer 2/4 |
| Design date: 2013-12-22 |
| Version: 01 |



| |
|-----------------------------|
| JTA Design |
| TDA7294 8 channel amplifier |
| Layer:Layer 3/4 |
| Design date: 2013-12-22 |
| Version: 01 |



| |
|-----------------------------|
| JTA Design |
| TDA7294 8 channel amplifier |
| Layer:Bottom Layer 4/4 |
| Design date: 2013-12-22 |
| Version: 01 |



| |
|-----------------------------|
| JTA Design |
| TDA7294 8 channel amplifier |
| Layer:Solder Mask Bottom |
| Design date: 2013-12-22 |
| Version: 01 |

