

SIZE	QTY	SYM	PLATED	TOL
0.3	15	⊕ ^A	YES	+/-0.0
0.5	180	⊕	YES	+/-0.0
0.8	11	⊕ ^B	YES	+/-0.0
0.9	2	⊕ ^C	YES	+/-0.0
1	24	⊗	YES	+/-0.0
1.1	6	□	YES	+/-0.0
1.7	5	⊗	YES	+/-0.0
2.1	2	⊕ ^D	YES	+/-0.0
1.1	2	◇	NO	+/-0.0
3.2	4	⊗	NO	+/-0.0
3.3	6	⊕ ^E	NO	+/-0.0

JTA Design

DCX2496 digital input board and SRC fix

Layer:Drill Drawing

Design date: 2011-02-13

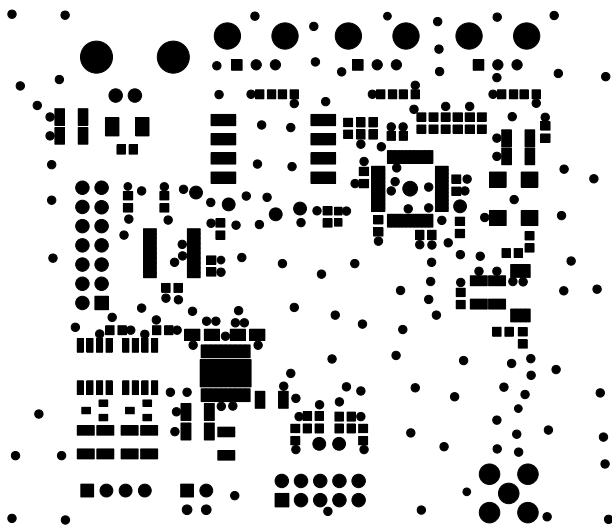
Version: 02

DCX2496 Digital input module
(c) JTA 2011

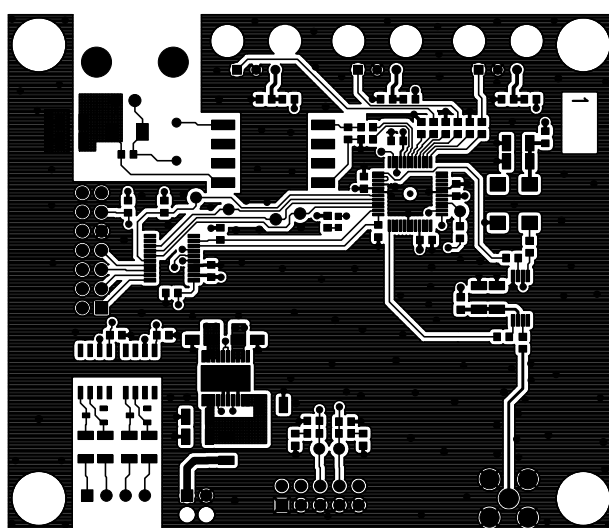
1

LOCK

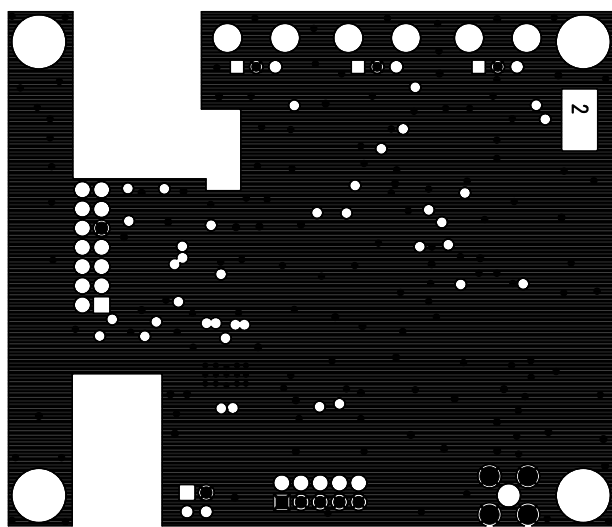
JTA Design
DCX2496 digital input board and SRC fix
Layer:Top Silkscreen
Design date: 2011-02-13
Version: 02



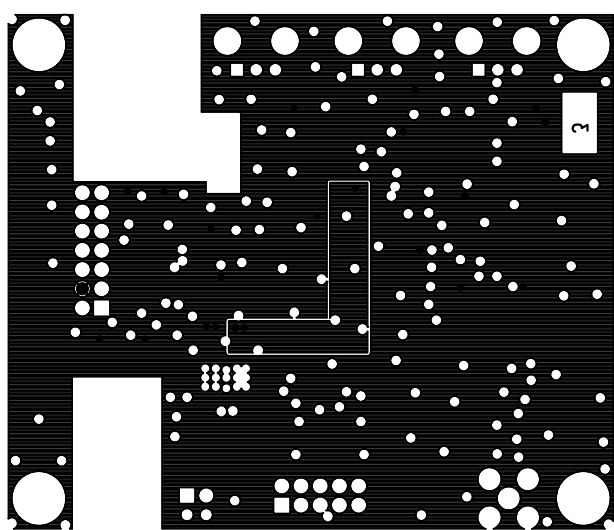
JTA Design
DCX2496 digital input board and SRC fix
Layer:Solder Mask Top
Design date: 2011-02-13
Version: 02



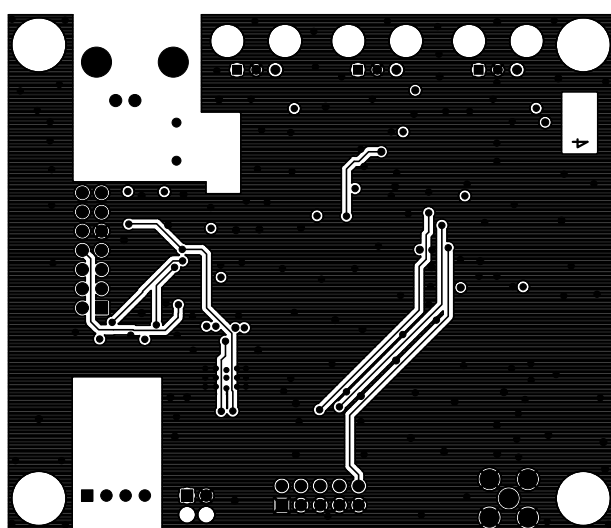
JTA Design
DCX2496 digital input board and SRC fix
Layer:Top Layer 1/4
Design date: 2011-02-13
Version: 02



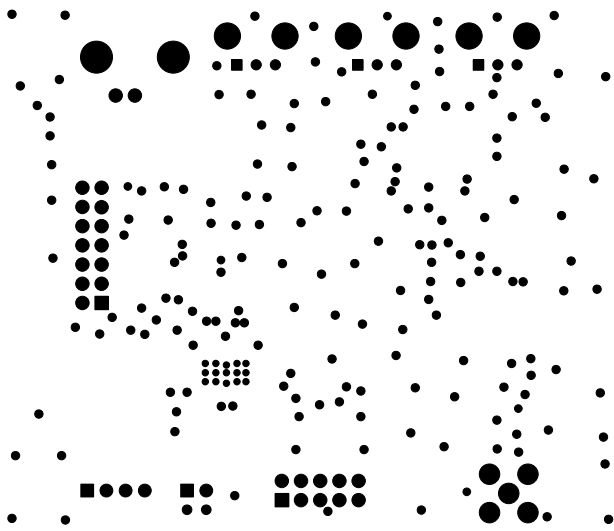
JTA Design
DCX2496 digital input board and SRC fix
Layer:Layer 2/4
Design date: 2011-02-13
Version: 02



JTA Design
DCX2496 digital input board and SRC fix
Layer:Layer 3/4
Design date: 2011-02-13
Version: 02



JTA Design
DCX2496 digital input board and SRC fix
Layer:Bottom Layer 4/4
Design date: 2011-02-13
Version: 02



JTA Design
DCX2496 digital input board and SRC fix
Layer:Solder Mask Bottom
Design date: 2011-02-13
Version: 02

